



Desiré Momplé  
0605874148  
desire.momple@kwsa.co.za

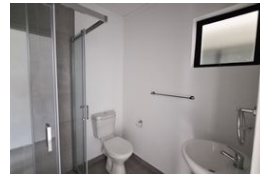
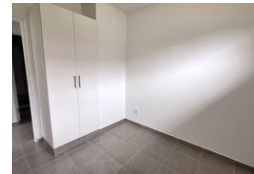
Contact Dolphin Coast

032 9461226

Douglas Crowe Drive, Ballito, 4420 - 14  
Silverstone Way



Web Ref PMR986



R1,029,000



**Monthly Bond Repayment** R10,621.22

Calculated over 20 years at 11% with no deposit.

**Transfer Costs** R32,749.00 **Bond Costs** R25,220.00

These calculations are only a guide. Please ask your conveyancer for exact calculations.

**Monthly Levy** R922 **Monthly Rates** R684

### Stylish 2-Bed Apartment in a Prime New Development!

Welcome to your new home in the heart of Sheffield Hills! This stylish two-bedroom top-floor apartment offers contemporary living in a brand-new development, perfect for first-time buyers, young professionals, or investors.

Boasting 49sqm of well-designed space, the apartment features an open-plan layout, modern finishes, and plenty of natural light. The top-floor position ensures added privacy and elevated views, making it an ideal urban retreat.

There are upgrade options to include a gas hob, gas oven and more.

Don't miss this opportunity to own a sleek, move-in-ready apartment in one of the area's most exciting new developments. Contact us today to arrange a viewing!

### Features

#### Interior

Bedrooms	2
Bathrooms	2
Kitchens	1
Recep. Rooms	1
Furnished	No

#### Exterior

Carports / Parkings	1
Security	Yes
Pool	No
Views	False

#### Sizes

Floor Size	49m²
------------	------