



**Desiré Momplé**  
0605874148  
desire.momple@kwsa.co.za

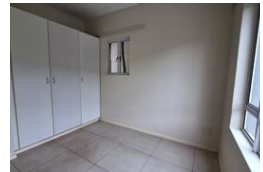
Contact Dolphin Coast

032 9461226

Douglas Crowe Drive, Ballito, 4420 - 14  
Silverstone Way



Web Ref PMR975




R10,815 pm

**Lease Period** 12 months  
**Annual Escalation** -

**Availability** Immediately

**Deposit** -

 2  2

## Ground-Floor Apartment with Pet-Friendly Garden

Discover comfortable living in this spacious 2-bedroom, 2-bathroom ground-floor unit located in the sought-after secure estate of Sheffield Beach.

This well-appointed home comes with two open parking bays and air-conditioning in the main bedroom and lounge. The open-plan layout seamlessly connects the lounge and modern kitchen, creating an inviting space for everyday living. Step outside onto your private undercover patio, overlooking a garden and greenbelt views—perfect for relaxation or entertaining guests.

Pet-friendly (subject to Body Corporate approval).

Available from 1 April 2025.

Enjoy the exceptional lifestyle amenities within the estate, including 24-hour security, a swimming pool, clubhouse, braai area, catch-and-release dams, and a rugby/soccer field—all set within beautifully landscaped gardens.

Don't miss...

## Features

**Pets Allowed** Yes

### Interior

Bedrooms	2
Bathrooms	2
Kitchens	1
Recep. Rooms	1
Furnished	No

### Exterior

Carports / Parkings	2
Security	Yes
Pool	No
Views	False

### Sizes

Floor Size	72m²
------------	------