

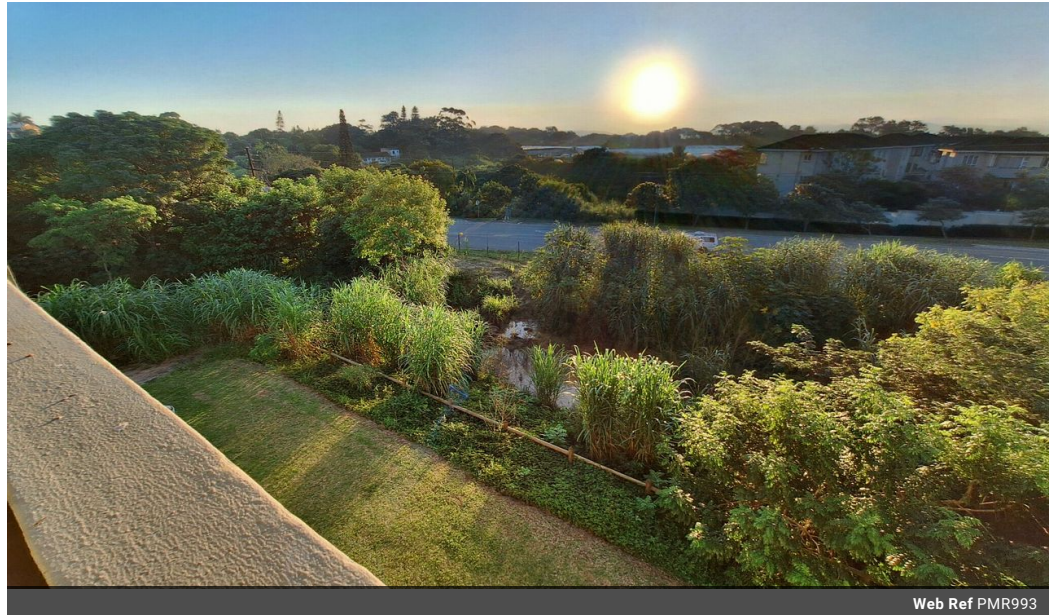


Desiré Momplé
0605874148
desire.momple@kwsa.co.za

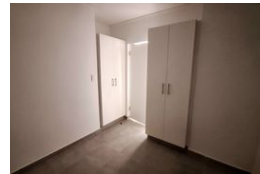
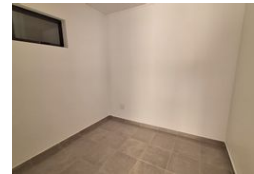
Contact Dolphin Coast

032 9461226

Douglas Crowe Drive, Ballito, 4420 - 14
Silverstone Way



Web Ref PMR993



R1,054,035



2



2

Monthly Bond Repayment R10,879.63

Calculated over 20 years at 11% with no deposit.

Transfer Costs R32,749.00 **Bond Costs** R25,220.00

These calculations are only a guide. Please ask your conveyancer for exact calculations.

Monthly Levy R922 **Monthly Rates** R684

Modern Top Floor Apartment – Secure Estate Living in Sheffield Hills

Elevate your lifestyle with this stylish apartment in the sought-after Sheffield Hills estate, located just minutes from the unspoiled beaches of Sheffield and Salt Rock. Perfect for professionals, couples, or investors, this unit combines sleek design with the tranquility of coastal living.

Featuring open-plan living areas, a modern kitchen, and two bedrooms with two well-appointed bathrooms. As a top floor unit, it offers enhanced privacy and elevated views of the surrounding greenbelt.

Located only 10 minutes from Ballito and close to top amenities, schools, hospitals, and shopping centres, Sheffield Hills is a prime investment opportunity on the North Coast.

Don't miss your chance to secure a modern home or high-performing investment in one of KZN's fastest-growing coastal suburbs.

Features

Pets Allowed Yes

Interior

| | |
|--------------|----|
| Bedrooms | 2 |
| Bathrooms | 2 |
| Kitchens | 1 |
| Recep. Rooms | 1 |
| Furnished | No |

Exterior

| | |
|---------------------|-------|
| Carports / Parkings | 1 |
| Security | No |
| Pool | No |
| Views | False |

Sizes

| | |
|------------|------|
| Floor Size | 49m² |
|------------|------|