



**Una van Jaarsveldt**  
Non-Principal Property  
Practitioner  
Registered with PPRA  
(FFC 115 789 4)  
0832824495  
una.van@kwsa.co.za

Contact Dolphin Coast

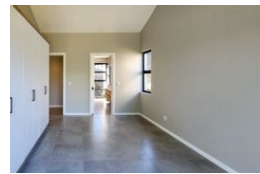
032 9461226

Douglas Crowe Drive, Ballito, 4420 - 14  
Silverstone Way

NO TRANSFER DUTY



Web Ref PMR981



R4,794,000

3 3 2

**Monthly Bond Repayment** R49,483.11

Calculated over 20 years at 11% with no deposit.

**Transfer Costs** R377,517.00 **Bond Costs** R59,150.00

These calculations are only a guide. Please ask your conveyancer for exact calculations.

**Monthly Levy** R3,278 **Monthly Rates** R2,345

Discover Elaleni – Ballito's Hidden Gem!

Welcome to your dream home in the beautiful Lifestyle Estate in Elaleni Coastal Forest Estate!

This stunning 3-bedroom, 2.5-bathroom house with a double garage is the perfect mix of comfort and style. The open-plan living area flows effortlessly onto a spacious veranda—for those lazy Ballito days - ready for a braai, entertaining friends or simply breaky while enjoying the peaceful surroundings. With large windows throughout, natural light fills every corner, creating a warm and inviting atmosphere that brings the beauty of nature indoors.

**\*\*Here's what this lovely home has to offer:\*\***

- Bright, open-plan living with lots of natural light and large sliding doors
- A contemporary design by the talented North Coast architect Julia Rutherford
- A master bedroom with its full en-suite bathroom, plus two cosy bedrooms sharing a...

## Features

**Pets Allowed** Yes

### Interior

|              |    |
|--------------|----|
| Bedrooms     | 3  |
| Bathrooms    | 3  |
| Kitchens     | 1  |
| Recep. Rooms | 2  |
| Furnished    | No |

### Exterior

|                     |       |
|---------------------|-------|
| Garages             | 2     |
| Carports / Parkings | 2     |
| Security            | Yes   |
| Pool                | Yes   |
| Views               | False |

### Sizes

|            |                   |
|------------|-------------------|
| Floor Size | 200m <sup>2</sup> |
| Land Size  | 504m <sup>2</sup> |